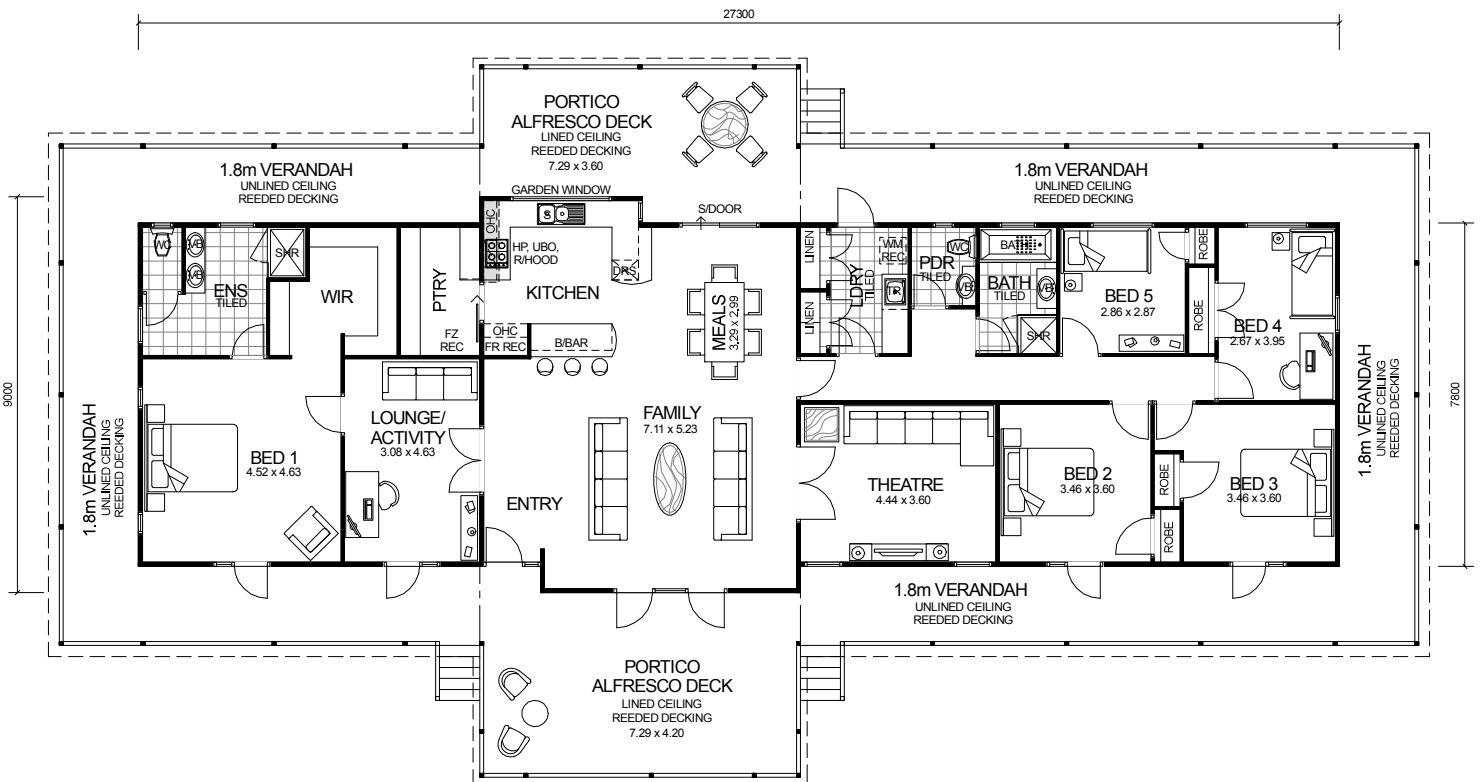


# QUEENSLANDER SERIES



## DESIGN FEATURES

- SMART GLASS TO ALL ALUMINIUM WINDOWS AND DOORS IN CLIMATE ZONES 4 & 5.
- CEILING FANS THROUGHOUT IN CLIMATE ZONES 4 & 5.
- LARGE KITCHEN WITH BREAKFAST BAR, PANTRY ROOM AND STAINLESS STEEL APPLIANCES.
- SEPARATE POWDER ROOM WITH VANITY BASIN.
- LARGE SHOWER RECESS WITH HIS AND HERS VANITY BASINS TO ENSUITE.
- ALUMINIUM BENCHMARK 4 LITE FRENCH DOORS TO FRONT ELEVATION.
- FEATURE LINED FRONT AND REAR PORTICO ALFRESCO DECKS INCLUDED.
- ADDITIONAL FEATURE LATTICE TRIM TO FRONT AND REAR PORTICOS.
- FEATURE DUTCH GABLE TO FRONT AND REAR PORTICO.
- 2.7m CEILING HEIGHT.

5 BEDROOM x 2.5 BATHROOM  
PLUS ACTIVITY AND THEATRE

**"HERITAGE"**

TOTAL HOME FRAMES © COPYRIGHT

OVERALL SIZE:  
Width 30.90m  
Length 16.20m

### AREA

HOUSE:	218.70m <sup>2</sup>
VERANDAH:	113.08m <sup>2</sup>
PORTICO (FRONT):	31.45m <sup>2</sup>
PORTICO (REAR):	24.02m <sup>2</sup>
<b>TOTAL:</b>	<b>387.25m<sup>2</sup></b>