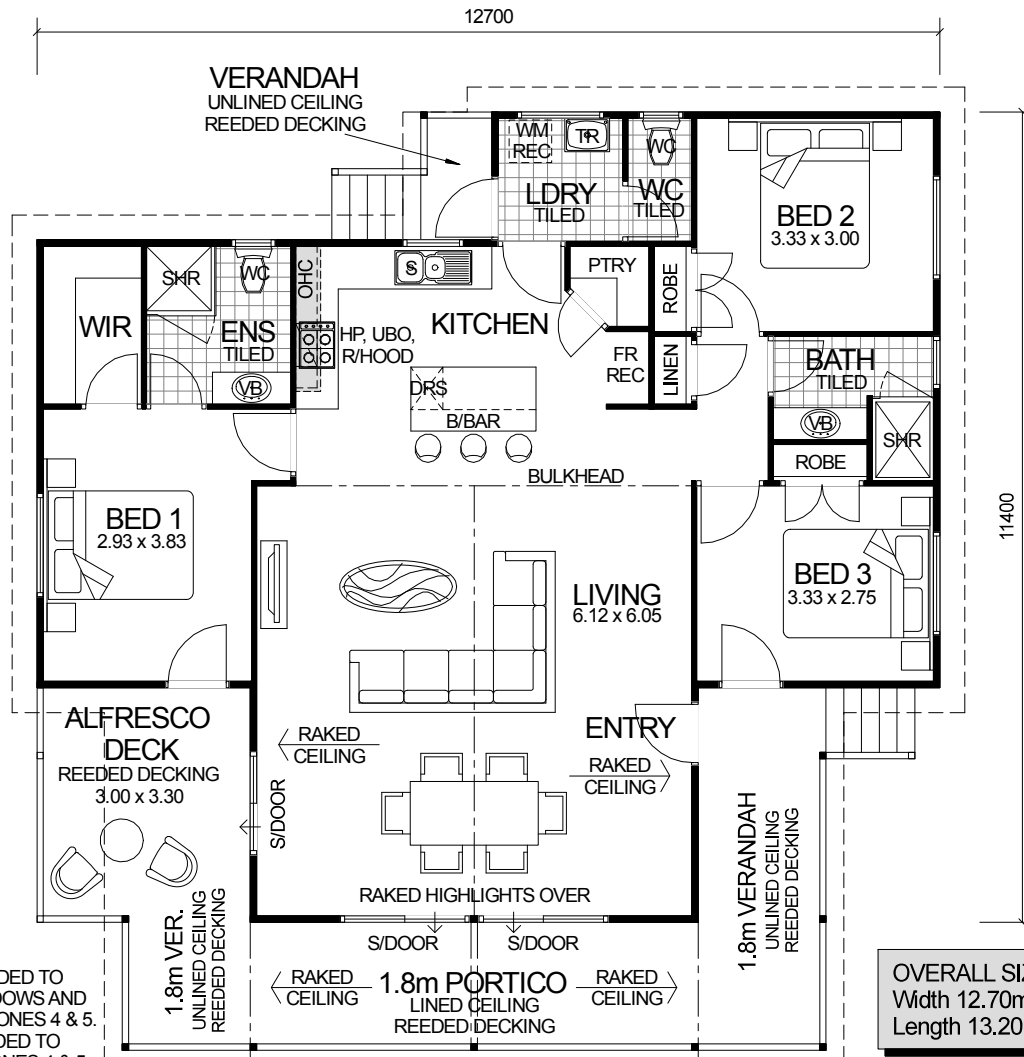


ROOFLINE SERIES



DESIGN FEATURES

- SMART GLASS INCLUDED TO ALL ALUMINIUM WINDOWS AND DOORS IN CLIMATE ZONES 4 & 5.
- CEILING FANS INCLUDED TO LIVING IN CLIMATE ZONES 4 & 5.
- LARGE GALLEY KITCHEN WITH BREAKFAST BAR, WALK-IN PANTRY AND STAINLESS STEEL APPLIANCES.
- LARGE WALK-IN LINEN.
- LARGE SHOWER RECESS TO BATHROOM.
- GLASS HIGHLIGHT WINDOWS TO FRONT OPEN GABLE.
- LARGE ALFRESCO DECK INCLUDED.
- HIGH RAKING CEILING TO LIVING.
- HIGH RAKING LINED CEILING TO PORTICO WITH OPEN GABLE.
- 2.7m CEILING HEIGHT.

3 BEDROOM x 2 BATHROOM

"ROOFLINE CUSTOM ELITE"

TOTAL HOME FRAMES © COPYRIGHT

OVERALL SIZE:
Width 12.70m
Length 13.20m

AREA

HOUSE:	112.14m ²
PORTICO:	11.34m ²
VERANDAH (FRONT):	12.42m ²
VERANDAH (REAR):	1.80m ²
ALFRESCO DECK:	9.90m ²
TOTAL:	147.60m²