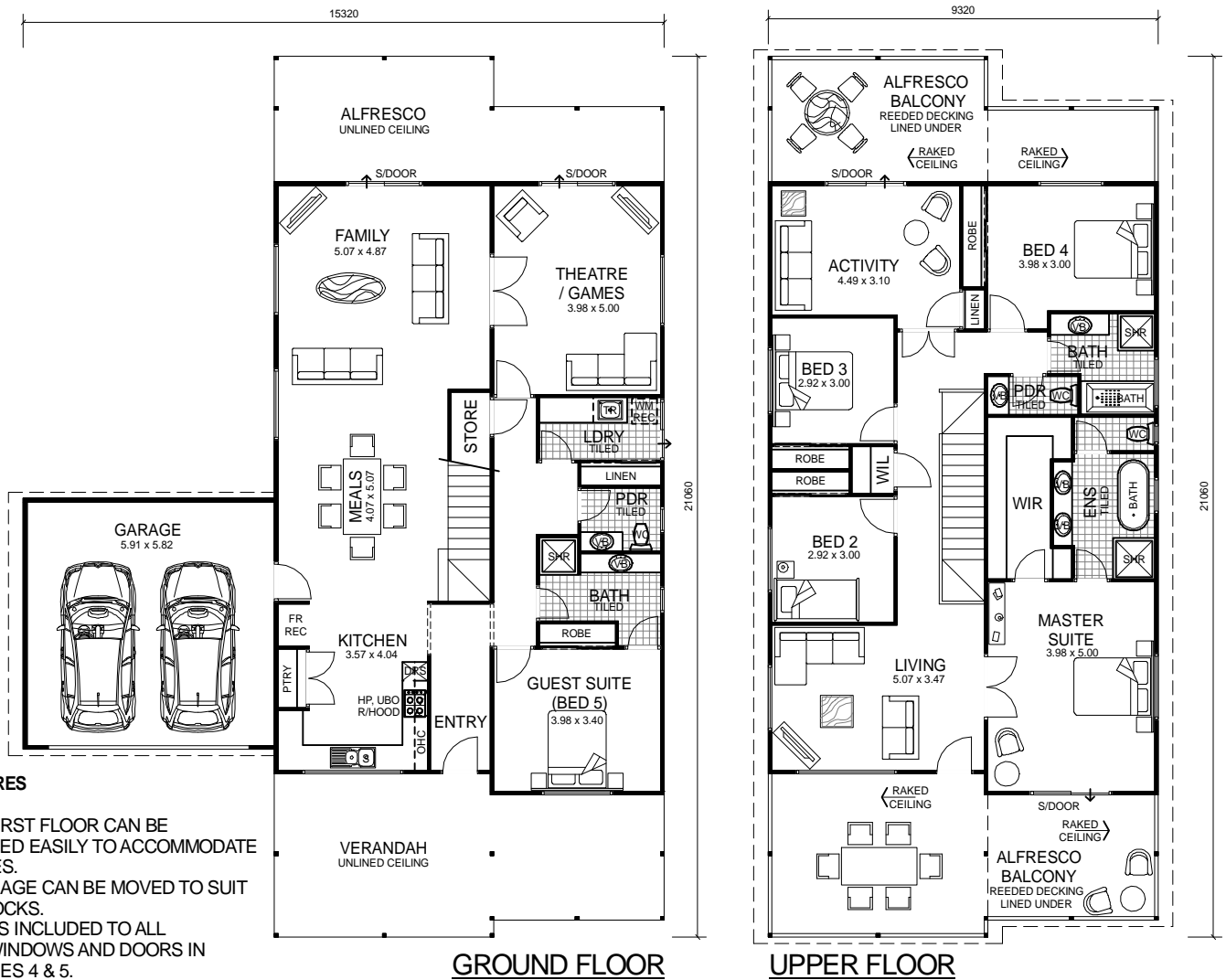


# TWO STOREY SERIES



## DESIGN FEATURES

- GROUND & FIRST FLOOR CAN BE INTERCHANGED EASILY TO ACCOMMODATE LIVING STYLES.
- DOUBLE GARAGE CAN BE MOVED TO SUIT NARROW BLOCKS.
- SMART GLASS INCLUDED TO ALL ALUMINIUM WINDOWS AND DOORS IN CLIMATE ZONES 4 & 5.
- LARGE MODERN KITCHEN WITH DOUBLE PANTRY AND STAINLESS STEEL APPLIANCES.
- TWO SEPARATE POWDER ROOMS WITH VANITY BASIN TO GROUND & UPPER FLOORS.
- HIS AND HERS VANITY BASINS WITH LARGE FEATURE BATH.
- ARCHITECTURALLY DESIGNED MODERN FRONT ELEVATION.
- LARGE ALFRESCO BALCONY DECKS TO UPPER FLOOR INCLUDED TO FRONT & REAR OF HOME.
- HIGH RAKING LINED CEILINGS TO ALFRESCO BALCONIES WITH OPEN GABLE TO FRONT & REAR OF HOME.
- FEATURE STAIRS INCLUDED.
- NARROW BLOCK COMPATIBLE.
- 2.7m GROUND FLOOR CEILING HEIGHT.
- 2.4m UPPER FLOOR CEILING HEIGHT.

5 BEDROOM x 3.5 BATHROOM  
PLUS THEATRE / GAMES & ACTIVITY

**"ULTIMATE 5 x 3.5"**

TOTAL HOME FRAMES © COPYRIGHT

**NARROW BLOCK  
COMPATIBLE**

## AREA

GROUND FLOOR:	134.05m <sup>2</sup>
UPPER FLOOR:	134.05m <sup>2</sup>
GARAGE:	36.00m <sup>2</sup>
FRONT VERANDAH:	32.64m <sup>2</sup>
REAR VERANDAH:	23.08m <sup>2</sup>
FRONT BALCONY:	32.64m <sup>2</sup>
REAR BALCONY:	23.08m <sup>2</sup>
<b>TOTAL:</b>	<b>415.54m<sup>2</sup></b>

**OVERALL SIZE:**  
Width 15.32m  
Length 21.06m