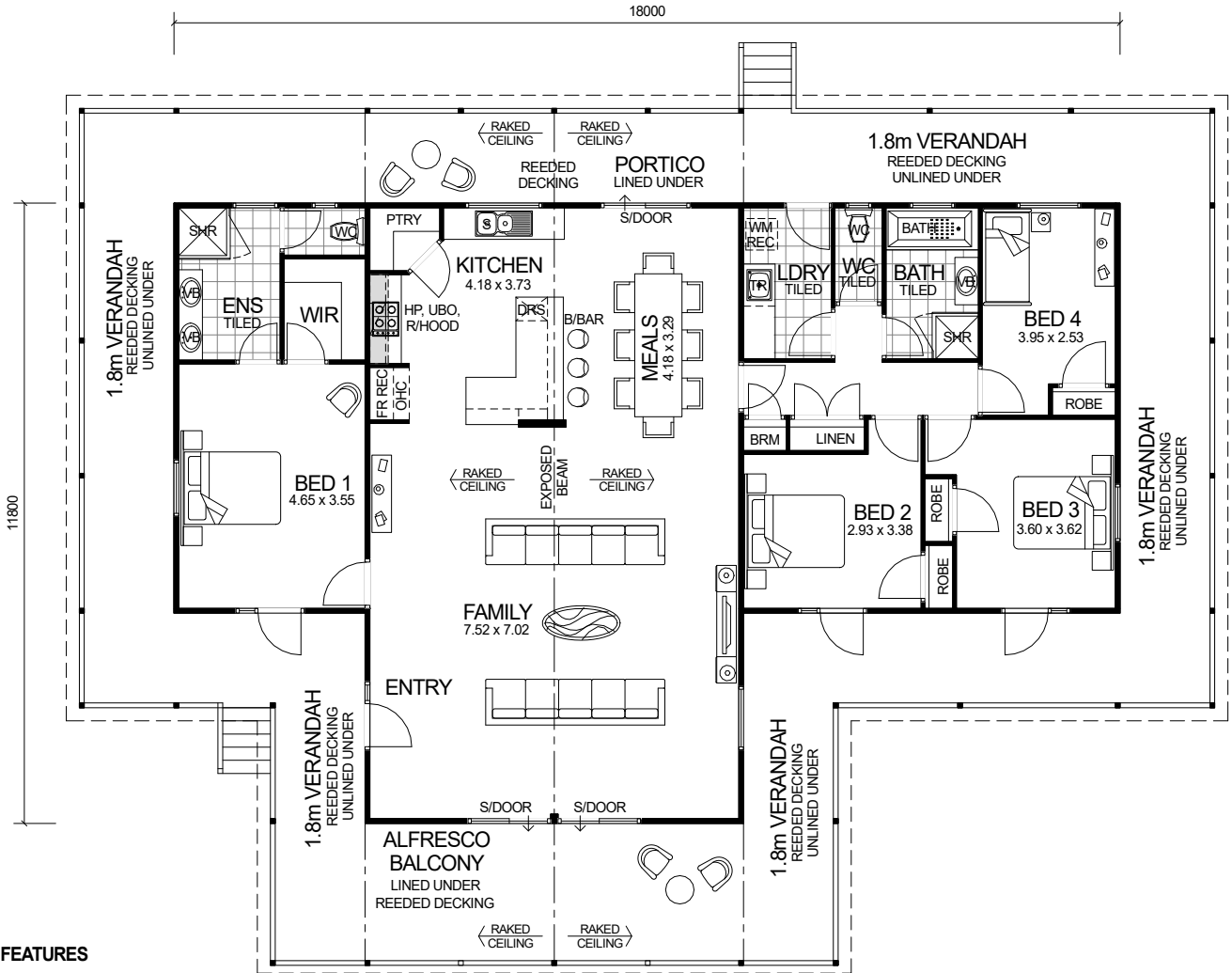


# QUEENSLANDER SERIES



## DESIGN FEATURES

- SMART GLASS INCLUDED TO ALL ALUMINIUM WINDOWS AND DOORS IN CLIMATE ZONES 4 & 5.
- LARGE KITCHEN WITH BREAKFAST BAR, WALK-IN PANTRY AND STAINLESS STEEL APPLIANCES.
- HIS & HERS VANITY BASINS TO ENSUITE.
- LARGE ALFRESCO BALCONY DECK INCLUDED.
- GLASS HIGHLIGHT WINDOWS TO FRONT OPEN GABLE.
- HIGH RAKING CEILING TO LIVING, MEALS AND KITCHEN INCLUDING LINED RAFTERS AND EXPOSED BEAM.
- HIGH RAKING LINED CEILING TO ALFRESCO BALCONY
- FEATURE REAR PORTICO WITH RAKING LINED CEILING OVER KITCHEN & MEALS.
- 2.7m CEILING HEIGHT.

**OVERALL SIZE:**  
Width 16.30m  
Length 21.60m

4 BEDROOM x 2 BATHROOM

**"HIGHLIGHT 4 x 2"**

TOTAL HOME FRAMES © COPYRIGHT

## AREA

HOUSE:	169.20m <sup>2</sup>
VERANDAH:	97.56m <sup>2</sup>
ALFRESCO BALCONY:	19.44m <sup>2</sup>
PORTICO:	12.96m <sup>2</sup>
<b>TOTAL:</b>	<b>299.16m<sup>2</sup></b>