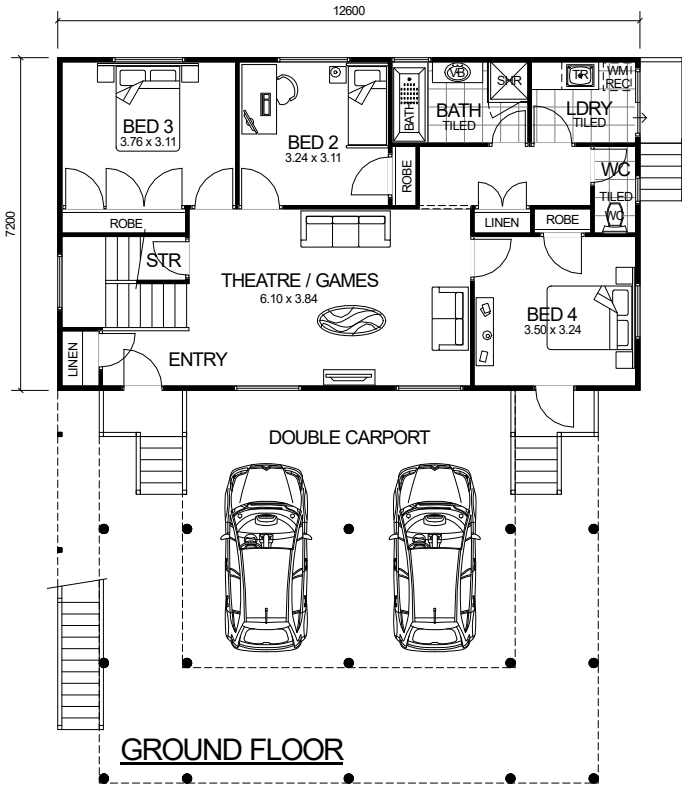


TWO STOREY SERIES



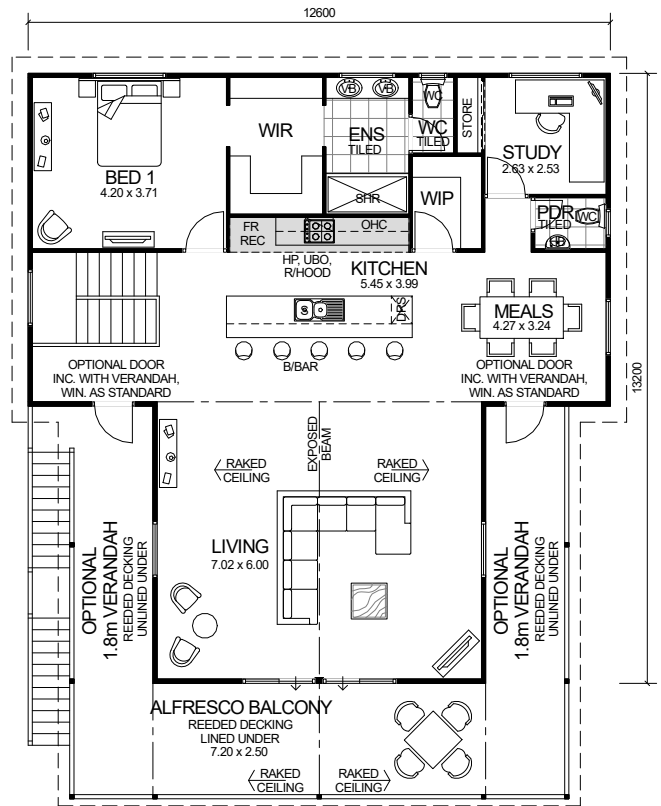
* ALTERNATE ELEVATION *



GROUND FLOOR

DESIGN FEATURES

- SMART GLASS INCLUDED TO ALL ALUMINIUM WINDOWS AND DOORS IN CLIMATE ZONES 4 & 5.
- LARGE MODERN GALLEY KITCHEN WITH BREAKFAST BAR, WALK-IN PANTRY AND STAINLESS STEEL APPLIANCES.
- SEPARATE POWDER ROOM WITH VANITY BASIN.
- HIS AND HERS VANITY BASINS WITH LARGE FEATURE SHOWER TO ENSUITE.
- GLASS HIGHLIGHT WINDOWS TO FRONT OPEN GABLE.
- LARGE ALFRESCO BALCONY DECKS TO UPPER FLOOR INCLUDED.
- HIGH RAKING CEILINGS TO LIVING INCLUDING LINED RAFTERS AND EXPOSED BEAM.
- HIGH RAKING LINED CEILING TO ALFRESCO BALCONY WITH OPEN GABLE.
- FEATURE STAIRS INCLUDED.
- NARROW BLOCK COMPATIBLE.
- DOWNSTAIRS DOUBLE CARPORT INCLUDED, CAN BE ENCLOSED TO BECOME A GARAGE ON REQUEST.
- OPTIONAL TWO FRONT ELEVATION CHOICES - ASK YOUR REPRESENTATIVE.
- 2.4m UPPER AND LOWER CEILING HEIGHT.



UPPER FLOOR

**4 BEDROOM x 2.5 BATHROOM
PLUS THEATRE/GAMES & STUDY**

"VISION EXPANSE"

TOTAL HOME FRAMES © COPYRIGHT

**NARROW BLOCK
COMPATIBLE**

AREA	
GROUND FLOOR:	90.72m ²
UPPER FLOOR:	133.92m ²
ALFRESCO BALCONY:	18.00m ²
TOTAL:	242.64m²
OPTIONAL VER.	30.60m ²

OVERALL SIZE:
Width 12.60m
Length 15.70m