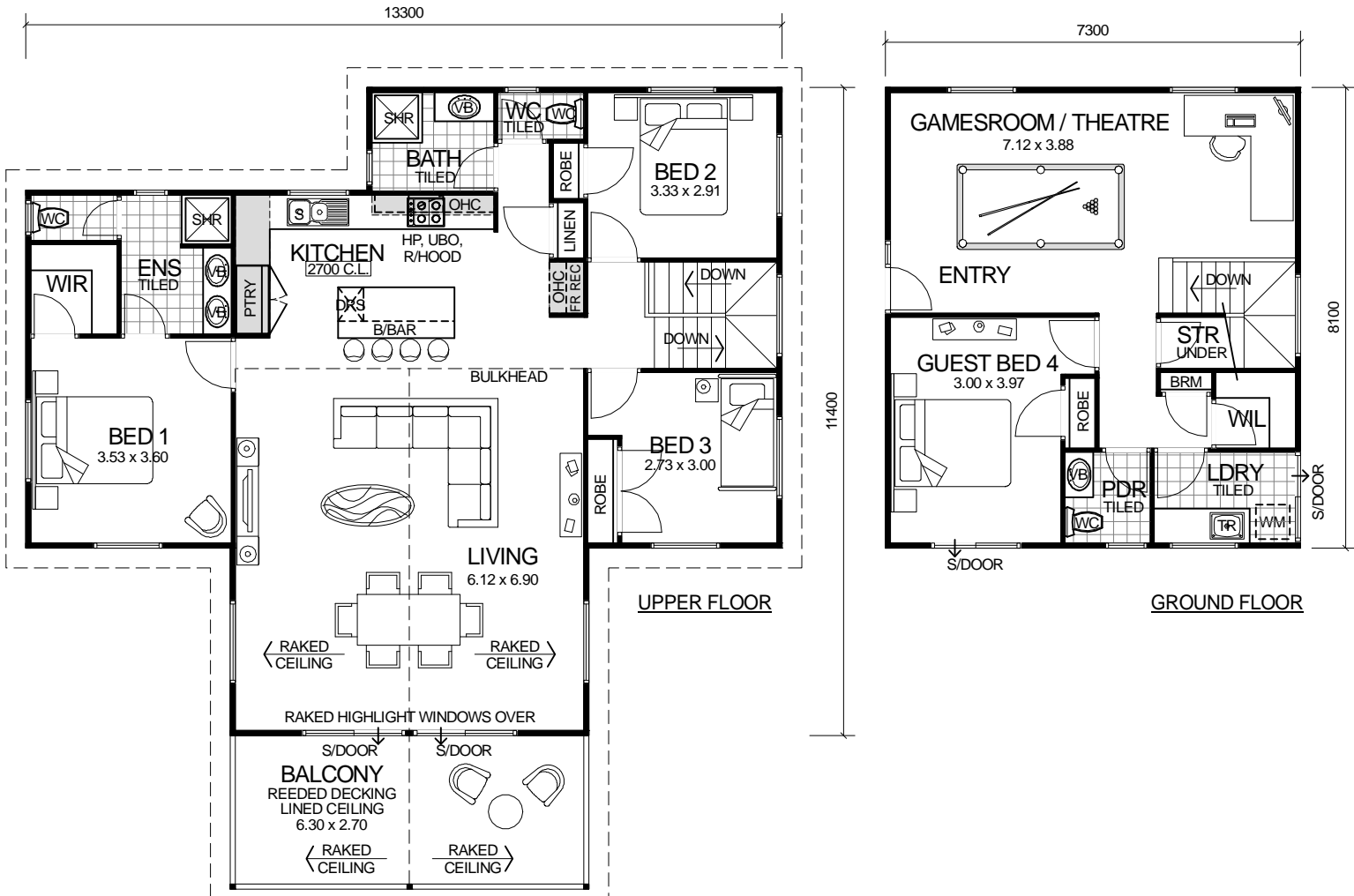


TWO STOREY SERIES



DESIGN FEATURES

- SMART GLASS INCLUDED TO ALL ALUMINIUM WINDOWS AND DOORS IN CLIMATE ZONES 4 & 5.
- CEILING FANS INCLUDED TO LIVING IN CLIMATE ZONES 4 & 5.
- LARGE GALLEY KITCHEN WITH BREAKFAST BAR, AND STAINLESS STEEL APPLIANCES.
- HIS & HERS VANITY BASINS TO ENSUITE.
- GLASS HIGHLIGHT WINDOWS.
- HIGH RAKING CEILING TO LIVING.
- 2.7m CEILING HEIGHT.

4 BEDROOM x 2.5 BATHROOM

"CUSTOM ELITE DELUXE"

TOTAL HOME FRAMES © COPYRIGHT

OVERALL SIZE:	
Width	13.30m
Length	14.10m

AREA	
GROUND FLOOR:	59.13m ²
UPPER FLOOR:	117.72m ²
BALCONY:	17.01m ²
TOTAL:	193.86m²