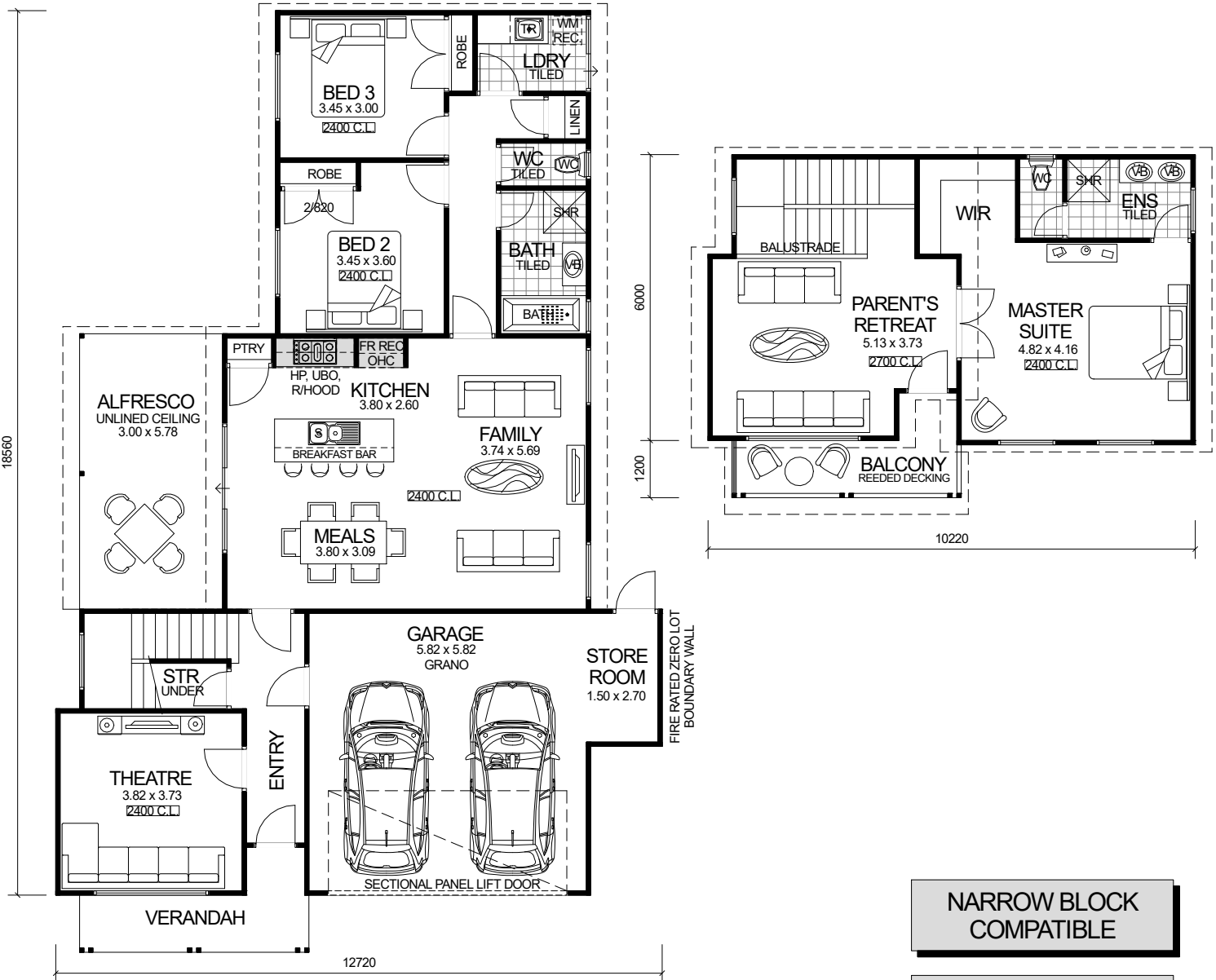


TWO STOREY SERIES



DESIGN FEATURES

- ARCHITECTURALLY DESIGNED MODERN IN VOGUE FRONT ELEVATION.
- SMART GLASS TO ALL ALUMINIUM WINDOWS AND DOORS IN CLIMATE ZONES 4 & 5.
- LARGE KITCHEN WITH BREAKFAST BAR, AND STAINLESS STEEL APPLIANCES.
- HIS & HERS VANITY BASINS TO ENSUITE.
- FEATURE ENTRY & BALCONY DOOR.
- FEATURE LINED ENTRY VERANDAH INCLUDED.
- 2.4m CEILING HEIGHT WITH RAISED CEILING TO PARENT'S RETREAT.
- LARGE DOUBLE GARAGE JOINED TO MAIN HOME WITH LINED CEILING, CONCRETE SLAB AND REMOTE DOUBLE SECTIONAL DOOR.
- STORE ROOM INCLUDED.
- THEATRE INCLUDED.
- NARROW BLOCK COMPATIBLE.

3 BEDROOM x 2 BATHROOM
PLUS THEATRE & RETREAT

"COTTESLOE"

TOTAL HOME FRAMES © COPYRIGHT

NARROW BLOCK
COMPATIBLE

OVERALL SIZE:
Width 12.72m
Length 19.76m

AREA

GROUND FLOOR:	119.47m ²
UPPER FLOOR:	59.50m ²
GARAGE / STORE:	39.34m ²
VERANDAH:	6.99m ²
ALFRESCO:	17.34m ²
BALCONY:	6.98m ²
TOTAL:	249.62m²