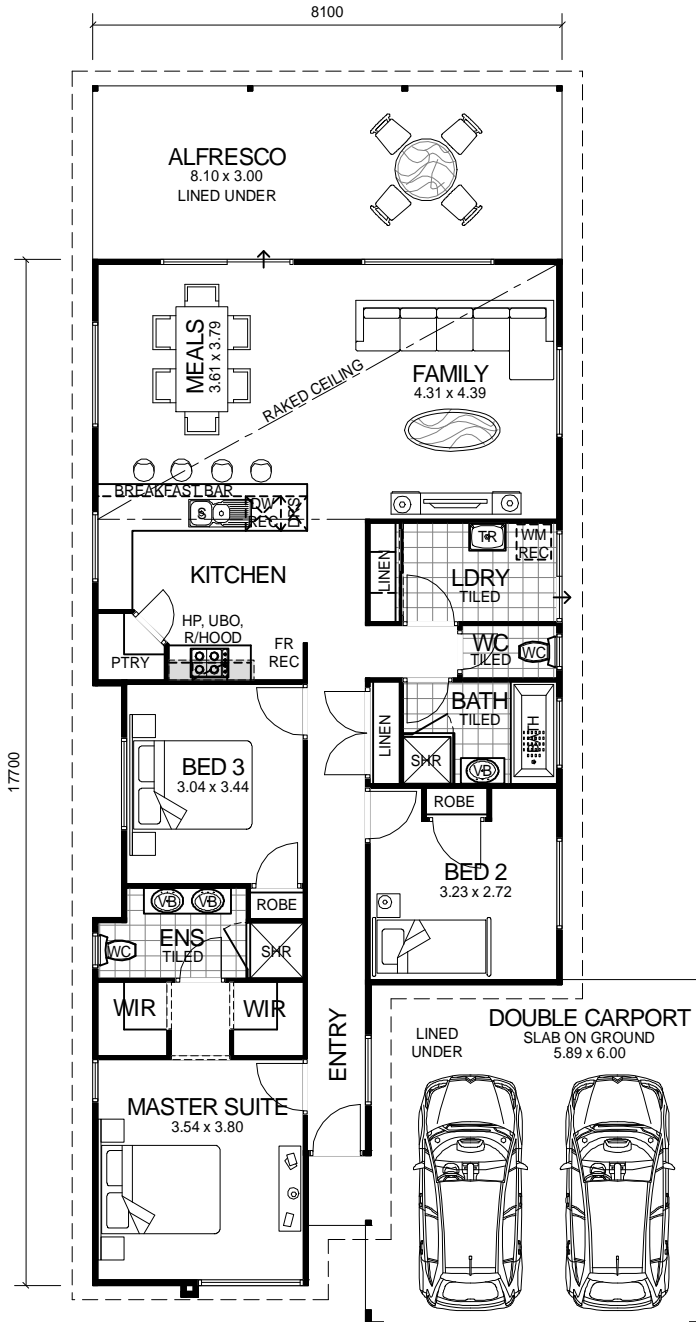
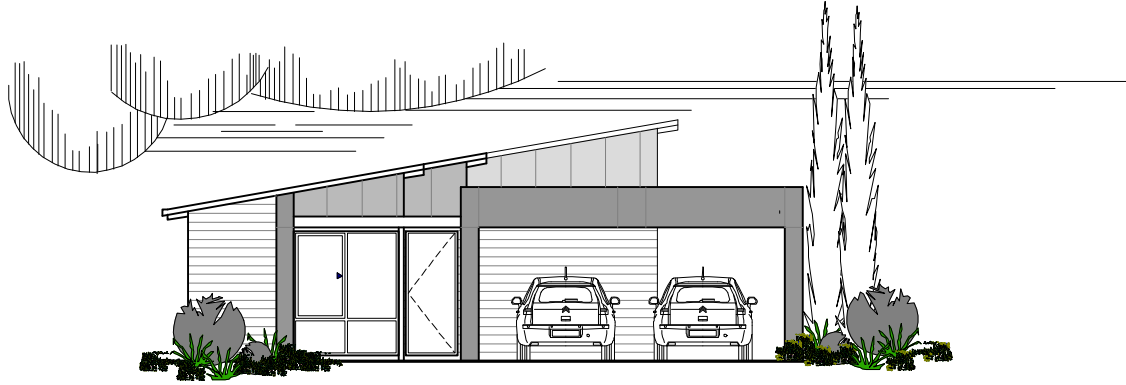


CITY SERIES



**NARROW BLOCK
COMPATIBLE**

OVERALL SIZE:
Width 10.60m
Length 21.42m

DESIGN FEATURES

- ARCHITECTURALLY DESIGNED WITH JAMES HARDIE SCYON CLADDING TO FRONT ELEVATION AND MODERN ROOF.
- SMART GLASS TO ALL ALUMINIUM WINDOWS AND DOORS IN CLIMATE ZONES 4 & 5.
- 2.4m CEILING HEIGHT.
- LARGE DOUBLE GARAGE JOINED TO MAIN HOME WITH LINED CEILING.
- LARGE FEATURE ALFRESCO OFF FAMILY TO REAR OF HOME WITH LINED CEILING.
- LARGE KITCHEN WITH WALK IN PANTRY AND STAINLESS STEEL APPLIANCES.
- DISHWASHER RECESS AND BREAKFAST BAR INCLUDED TO KITCHEN.
- HIS & HERS VANITY BASINS TO ENSUITE.
- HIS & HERS WALK IN ROBES.
- SLIDING DOORS TO LINEN PRESS IN LAUNDRY.
- HIGHER RAKED CEILING TO FAMILY AND MEALS AREA.

3 BEDROOM x 2 BATHROOM

"THE GALAXY"

TOTAL HOMES © COPYRIGHT

AREA	
HOUSE:	121.83m ²
ALFRESCO:	24.30m ²
CARPORY:	35.96m ²
TOTAL:	182.09m²