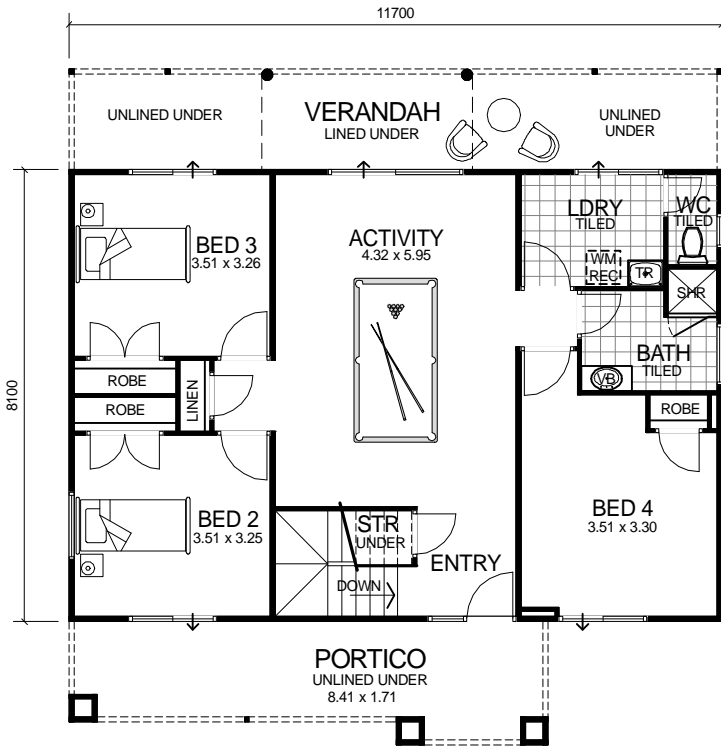
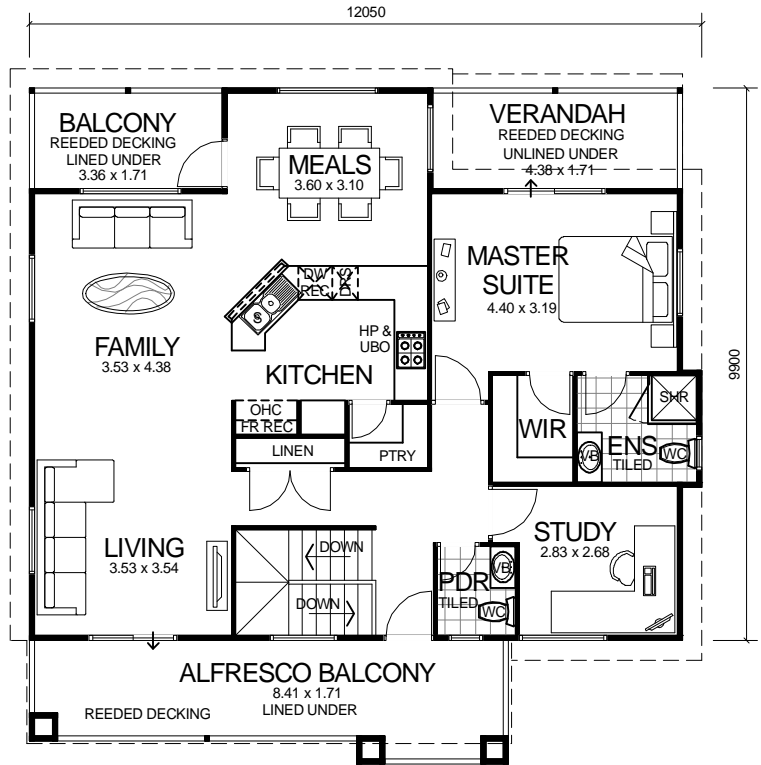


CITY SERIES



GROUND FLOOR



UPPER FLOOR

DESIGN FEATURES

- ARCHITECTURALLY DESIGNED WITH JAMES HARDIE SCYON CLADDING TO FRONT ELEVATION AND MODERN ROOF.
- SMART GLASS TO ALL ALUMINIUM WINDOWS AND DOORS IN CLIMATE ZONES 4 & 5.
- 2.4m CEILING HEIGHT TO GROUND FLOOR & 2.7m CEILING HEIGHT TO FIRST FLOOR.
- FEATURE ALFRESCO BALCONY OFF LIVING.
- LARGE KITCHEN WITH WALK IN PANTRY AND STAINLESS STEEL APPLIANCES.
- DISHWASHER RECESS INCLUDED TO KITCHEN.
- LARGE ACTIVITY AREA.
- SEPARATE POWDER ROOM.
- POWERCOATED ALUMINIUM BALUSTRADE WITH GLASS INFILL PANELS TO UPPER FLOOR.

4 BEDROOM x 2.5 BATHROOM PLUS STUDY

"THE GRANDEUR"

TOTAL HOMES © COPYRIGHT

OVERALL SIZE:
Width 11.70m
Length 12.21m

AREA

GROUND FLOOR:	94.71m ²
UPPER FLOOR:	102.31m ²
PORTICO:	16.84m ²
VERANDAH (LOWER):	21.05m ²
VERANDAH (UPPER):	8.05m ²
BALCONY (FRONT):	16.84m ²
BALCONY (REAR):	6.21m ²

TOTAL: 266.01m²